

**DRAFT**

**UNOFFICIAL TRANSLATION**

**KINGDOM OF CAMBODIA  
NATION, RELIGION, KING**

**Royal Government of Cambodia  
No. ....**

**SUB-DECREE**

on

**ESTABLISHMENT OF “PREY LANG” FORESTRY PROTECTED AND  
BIODIVERSITY CONSERVATION AREA**

**THE ROYAL GOVERNMENT OF CAMBODIA**

- Having seen the Constitution of the Kingdom of Cambodia
- Having seen Royal Decree No. NS/RKT/0908/1055 dated 25 September 2008 on the Appointment of the Royal Government of Cambodia;
- Having seen the Royal Decree No. 02/NS/94 dated 20 July 1994 promulgating it on the Organization and Functioning of the Council of Ministers;
- Having seen the Royal Decree No. NS/RKM/0196/13 dated 24 January 1996 promulgating the Law on the Establishment of the Ministry of Agriculture, Forestry, and Fisheries;
- Having seen the Royal Decree No. NS/RKM/1296/36 dated 24 December 1996 promulgating the Law on Environmental Protection and Management of Natural Resources;
- Having seen the Royal Decree No. NS/RKT/1199/07 dated 11 January 1999 on Determination and Management of Forest in Sloping Areas throughout the Kingdom of Cambodia;
- Having seen the Royal Decree No. NS/RKM/0701/09 dated 13 July 2001 promulgating the Law on Management and Exploitation of Mineral Resources;
- Having seen the Royal Decree No. NS/RKM/0801/14 dated 30 August 2001 promulgating the Land Law;
- Having seen the Royal Decree No. NS/RKM/0802/016 dated 31 August 2002 promulgating the Law on Forestry
- Having seen the Royal Decree No. NS/RKM/0208/007 dated 15 February 2008 promulgating the Law on Natural Protected Areas;
- Having seen the Royal Decree No. NS/RKM/0609/007 dated 10 June 2009 promulgating the Law on Tourism;
- Having seen the Sub-Decree No. 17 dated 07 April 2000 on the Organization and Conduct of the Ministry of Agriculture, Forestry, and Fisheries
- Having seen the Sub-Decree No. 64 dated 11 September 2003 on the Change in the Name of the Department of Forestry to the Forestry Administration;
- Having seen the Sub-Decree No. 188 dated 14 November 2008 on the Amendment of the Directorate General of the Ministry to the Secretariat General, the Promotion of the Forestry

Administration, the Fisheries Administration to a Rank Equal to a Directorate General, the Promotion of the Department of Agronomy and Agricultural Land Improvement to the Directorate General of Agriculture, and the Amendment of the Directorate General of Rubber Plantation to the Directorate General of Rubber under Ministry of Agriculture Forestry and Fisheries;

- Having obtained approval from the Council of Ministers in the plenary session held on ..... 2011.

IT IS HEREBY DECIDED

## CHAPTER I GENERAL PROVISIONS

### ARTICLE 1:

This Sub-decree has the objectives to establish “Prey Lang” forestry protected areas for biodiversity conservation located in the provinces of Kratie, Kampong Thom, Preah Vihear, and Stung Treng.

### ARTICLE 2:

This Sub-decree has the following objectives:

- To protect jungles in the central plain, which has a high biodiversity potential.
- To protect and conserve plants, forest, and all kind of globally endangered wildlife and species.
- To preserve natural environment system stability and to restore damaged ecology to provide peaceful habitats and reproduction of all kinds of biodiversity.
- To contribute to protection and conservation by implementing the Royal Government’s Millennium Development Goals in managing and preserving forest coverage.
- To contribute to preservation of tradition and religious beliefs of local communities living in protected areas.
- To preserve the use of natural resources by local communities to improve the livelihoods of the people in the areas and to contribute to implementation of the Royal Government’s poverty reduction programs.
- To contribute to sustainable, socio-economic development through taking part in management, use of forestry resources by local communities, development of natural tourism, ecotourism, and other activities with least impacts on forestry biodiversity resources and wildlife.
- To protect the carbon stock quantity found in all kinds plants in order to reduce emission of carbonic gas into the atmosphere.
- To take part in reducing climate change through protection of forest

- To prevent soil erosion, erosion of soil fertility, flooding; to maintain water source regulation and water quality
- To develop the economy through protection of biodiversity and forestry central system
- To support various activities, including scientific and technical research to develop and conserve watersheds and biodiversity, awareness raising, training, local community development, monitoring of environmental changes related to sustainable development and, local, national, and regional conservation.

## **CHAPTER 2**

### **DETERMINATION OF AREAS**

#### **ARTICLE 3:**

The “Prey Lang” forestry protected and biodiversity conservation area has a total area of 615,306 hectares situated in the provinces of Kratie, Kampong Thom, Preah Vihear, and Stung Treng with close boundary lines determined by main points with the following coordinates:

A (594781, 1525278)	B (593688, 1473735)	C (596632, 1468978)
D (596587, 1460177)	E (596280, 1460004)	F (596127, 1420797)
G (592019, 1422824)	H (584129, 1422824)	I (591575, 1408902)
J (585759, 1394054)	K (579186, 1396459)	L (563470, 1390452)
M (561025, 1390483)	N (561097, 1401018)	O (560491, 1400923)
P (558800, 1400929)	Q (559566, 1415597)	R (563406, 1425661)
S (565285, 1425198)	T (567931, 1424488)	U (570373, 1425003)
V (570561, 1425784)	W (549901, 1448329)	X (545174, 1452838)
Y (538836, 1455646)	Z (538610, 1455811)	A1 (537766, 1463436)
B1 (540031, 1463436)	C1 (540031, 1473005)	D1 (535905, 1473005)
E1 (539979, 1477433)	F1 (539995, 1485638)	G1 (546023, 1484983)
H1 (561715, 1502025)	I1 (562380, 1525277)	

as shown in the map with a scale of 1:700,000 attached as an Appendix to this Sub-Decree.

#### **ARTICLE 4:**

The “Prey Lang” forestry protected and biodiversity conservation area in the provinces of Kratie, Kampong Thom, Preah Vihear, and Stung Treng as stipulated under Article 3 of this Sub-Decree may be amended as necessary based on basic technical and concrete information from scientific research.

Such amendment shall be determined by a Sub-Decree.

## **CHAPTER 3**

### **MANAGEMENT**

#### **ARTICLE 5:**

The “Prey Lang” forestry protected and biodiversity conservation areas are an area to be conserved for strenuous protection of natural environment system, such as maintaining regulation of water sources, conserving biodiversity, land, water, soil fertility, watersheds, animal habitats, natural, cultural assets, and preventing erosion.

Local communities living within or close to the “Prey Lang” forestry protected and biodiversity conservation area shall be protected and recognized for their rights to traditional usufruct and development of community ecotourism according to relevant existing laws and regulations.

#### **ARTICLE 6:**

The following activities within the “Prey Lang” forestry protected and biodiversity conservation area shall be prohibited:

- Occupation, clearance, burning, leveling, and surrounding to occupy forested land for ownership
- Installation of houses, buildings, and other bases without authorization from the Royal Government
- Construction or building of roads without study and authorization from the Royal Government
- Processing of forestry products, non-timber forestry products, or establishing and operating industrial / handicraft bases and all kinds of kilns
- Digging for prospecting minerals, taking rock to burn for lime or coal, or salty soil
- Clearance and turning natural forested land into a land for development of various agricultural crops plants
- Collection of forestry products and non-timber forestry products and hunting activities that affect forest and all kinds of wildlife

#### **ARTICLE 7:**

The Ministry of Agriculture, Forestry, and Fisheries shall be authorized to develop and manage the “Prey Lang” forestry protected and biodiversity conservation area in the provinces of Kratie, Kampong Thom, Preah Vihear, and Stung Treng in collaboration with relevant ministries / institutions and local authorities to ensure conservation and sustainable development of natural resources for the livelihoods of the citizens in this “Prey Lang” forestry protected and biodiversity conservation area

Development and management of the “Prey Lang” forestry protected and biodiversity conservation area shall be determined by a Prakas of the Minister of Agriculture, Forestry, and Fisheries.

### **CHAPTER 4 FINAL PROVISIONS**

#### **ARTICLE 8:**

Any regulations that contradict of this Sub-Decree shall be nullified.

**ARTICLE 9:**

The Minister in charge of the Office of the Council of Ministers, the Minister of Economy and Finance, the Minister of Agriculture, Forestry, and Fisheries, the Minister of Environment, the Minister of Land Management, Urbanization, and Construction, the Minister of Tourism, ministers, secretaries of state, of all relevant ministries / institutions, chairs of the governance councils, governors of Kratie, Kampong Thom, Preah Vihear, and Stung Treng shall be responsible to implement this Sub-Decree according to their respective tasks thereafter its signature.

Phnom Penh,

2011

**PRIME MINISTER**

**SAMDECH AKKA MOHA SENA  
PADEI TECHO HUN SEN**

CC:

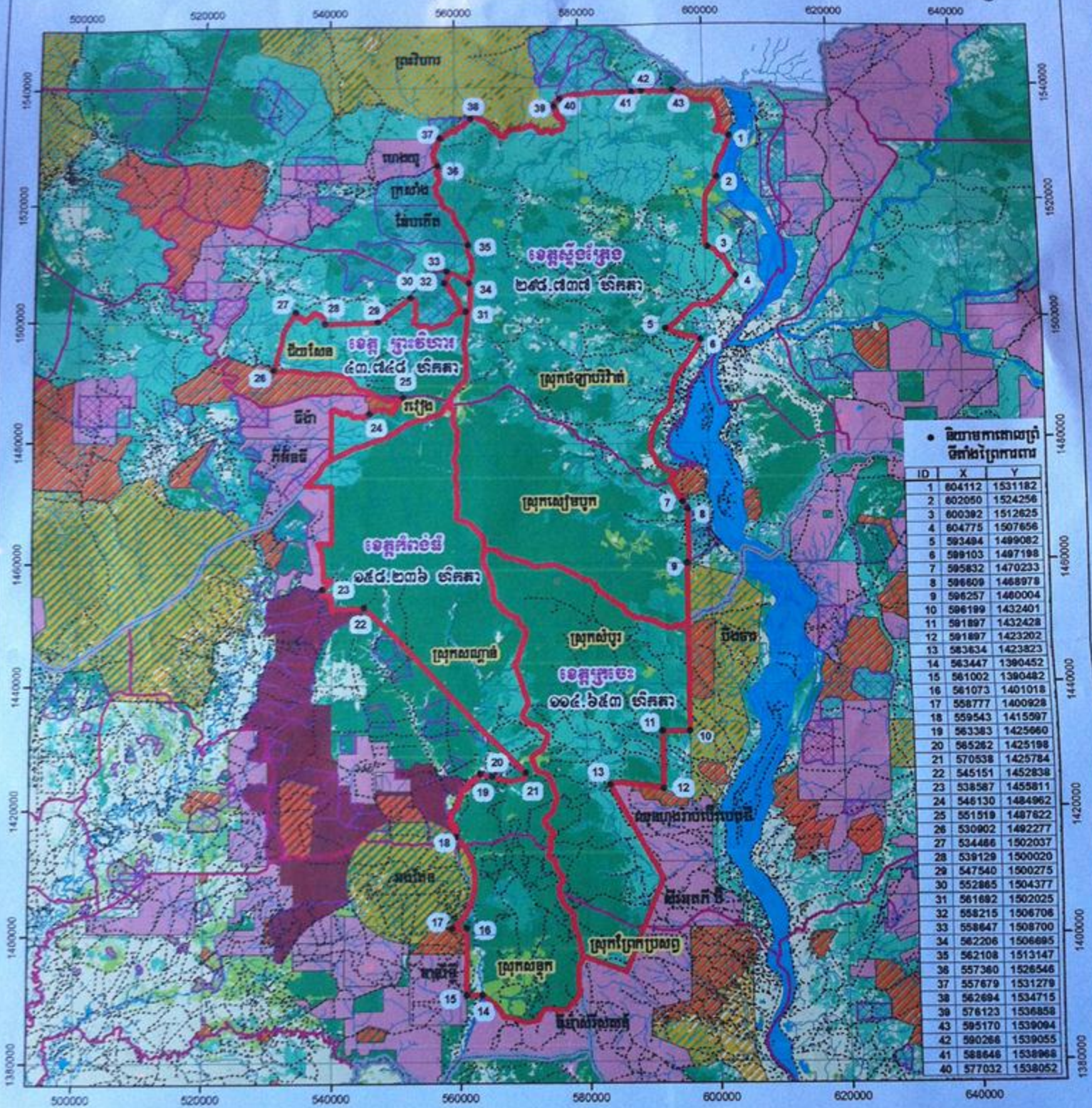
- Ministry of Royal Palace
- Secretariat General of the Constitutional Council
- Secretariat General of the Senate
- Secretariat General of the National Assembly
- Secretariat General of the Royal Government
- Cabinet of Samdech Prime Minister
- Cabinets of Excellencies, Lok Chumteav Deputy Prime Ministers
- As stipulated in Article 9
- Royal Gazette
- Archive

24.11.2011

ផែនទី ត្រួតពិនិត្យសម្រាប់ការស្រាវជ្រាវស្តីពីការប្រើប្រាស់ដី "ត្រួតពិនិត្យ" ស្ថិតនៅក្នុងខេត្តក្រចេះ និងខេត្តកំពង់ឆ្នាំង

ផ្ទៃដីសរុប : ៦៦៥.៣៧៤ ហិកតា

កម្រិត



• ឈ្មោះកូអរដោនេចំណុចត្រួតពិនិត្យ

ID	X	Y
1	604112	1531182
2	602050	1524256
3	600382	1512625
4	604775	1507856
5	593484	1499082
6	599103	1497198
7	595832	1470233
8	596609	1468978
9	596257	1460004
10	596199	1432401
11	591897	1432428
12	591897	1423202
13	583634	1423823
14	563447	1390452
15	561002	1390482
16	561073	1401018
17	558777	1400928
18	559543	1415997
19	563383	1425660
20	565282	1425198
21	570538	1425784
22	545151	1452838
23	538587	1455811
24	546130	1484962
25	551519	1487822
26	530902	1492277
27	534486	1502037
28	539129	1500020
29	547540	1500275
30	552865	1504377
31	561692	1502025
32	558215	1506706
33	558647	1508700
34	562206	1506695
35	562108	1513147
36	557360	1526546
37	557679	1531279
38	562694	1534715
39	576123	1536858
40	595170	1539094
41	588646	1538968
42	590268	1539055
43	577032	1538052

សញ្ញាសម្គាល់

- ផ្លូវ
- ផ្លូវទឹក
- ព្រំប្រទល់ស្រុក
- ព្រំប្រទល់ខេត្ត
- ព្រំប្រទល់ត្រួតពិនិត្យ
- ▨ សហគមន៍ត្រៃឈើមានប្រកាសនិងកំណត់ស្នើសុំ
- ▨ ដីសម្បទានសេដ្ឋកិច្ច
- ▨ តំបន់ការពារ និងព្រៃការពារ
- ▨ តំបន់រៀបចំគម្រោងរដ្ឋ
- ▨ តំបន់សក្តានុពល

Coordinate System:  
 Projection :UTM  
 Zone :48N  
 Horizontal Datum Indian :1960  
 Spheroid :Everest  
 UTM Grid :20 Km



មាត្រដ្ឋាន ១:៦០០.០០០



កម្រិតស្រែឈើឆ្នាំ២០០៦

- ត្រៃស្រោង
- ត្រៃពាក់កណ្តាលស្រោង
- ត្រៃឈូក
- ត្រៃរដ្ឋង្វា
- ត្រៃគុម្ពាតបែក
- ត្រៃគុម្ពាតស្ងួត
- ដីគ្មានគំរូត្រៃ



■ ត្រៃសម្បទាន